

2m photovoltaic panel



2m photovoltaic panel

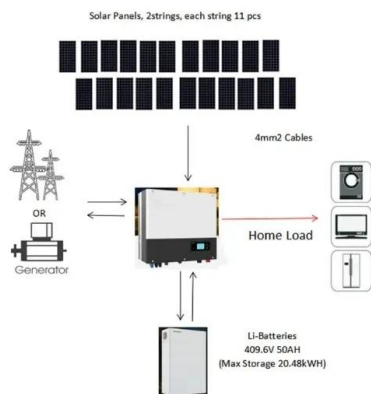


[Photovoltaic Panel Size and Price Comparison: A Buyer's Guide for 2024](#)

Looking for the best solar panel size and price for your project? This detailed comparison table breaks down dimensions, wattage, efficiency, and costs to help you make informed decisions.

Solar Panel 2m x 1m

Shop high-quality solar panel 2m x 1m from reliable suppliers. Enjoy durable, efficient, and affordable solar power for your needs. Buy now!

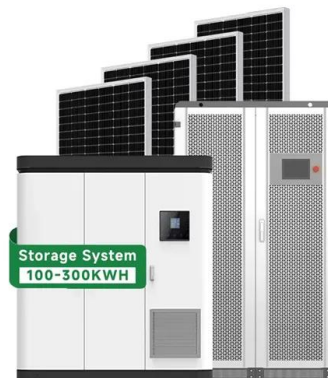


[Understanding Solar Panel Dimensions In 2025: A Complete Size Guide](#)

Explore the most common solar panel dimensions in 2025, including residential and commercial sizes. Learn how solar panel size dimensions affect power, installation, and efficiency.

[Solar Panels Sizes and Weights \(All Sizes\)](#)

The weight of a solar panel per unit is an important consideration when deciding which size is best for your home, which we will discuss further in a later section.



[Understanding 2m Photovoltaic Panel Prices in 2025: A Buyer's Guide](#)

When planning a solar installation, the 2m photovoltaic panel price becomes your compass in navigating renewable energy investments. But here's the kicker - prices have become more dynamic than a ...



[Solar Panel Output Per Square Meter](#)

Discover how much electricity solar panels generate per square meter, explore efficiency factors, technology comparisons, and future innovations in photovoltaic energy.



[Solar Panel Size & Dimensions Guide 2025, Complete Specs](#)

In this comprehensive guide, you'll learn everything you need to know about solar panel sizing, from standard dimensions to weight considerations, helping you determine the perfect solar ...



[a photovoltaic panel of dimension 2m x 4m is installed](#)

The installation of a photovoltaic panel with a dimension of 2m x 4m requires careful planning and consideration. The panel needs to be positioned in an area with ample sunlight and minimal shading ...



[Solar panel sizes & dimensions: explained \[UK, 2026\]](#)

The average solar panel used in residential installations is approximately 2m long and 1m wide, meaning a surface area of 2m², and is about 4cm thick. This makes them compact enough to fit ...

Contact Us

For catalog requests, pricing, or partnerships, please visit:
<https://xraydiamondsolutions.co.za>