

630 Inverter output voltage



Overview

- ATEX compliant - IP21 version - Schneider Electric (Altivar Process 630 series) - Rated output 315kW / 590A - Supply voltage 323-484Vac (380Vac / 400Vac / 415Vac / 440Vac nom.) (3-phase (3P)) - with Modbus / Modbus TCP / Ethernet communication capability - Floor-standing /. se relay R1 set to operating state Fault to sw se relay R1 set R1A, R1B,Fault R1C relay : R2A, R2C:Sequence relay R3A, R3C:Sequence rel t the operation of the logic inputs to the technology of the programmable controller . This is a circuit of DC to AC inverter I found online on a web site. Can anyone explain what will be output voltage if I give it 9 or 18 V from a DC battery?

The schematic is abysmal. The schematic shows them as PNPs. Please add this item to cart to request a quote or contact us at for product availability. Wall-mounting drives / built-in cabinet and floor-standing solutions are available with IP21 / IP23 / IP54 and IP55 protection degrees according to customer requirements. - Dual port. Quickly and easily find the right products and accessories for your applications. Start your sales inquiry online and an expert will connect with you. Safety Function (SF) Level Capability for Safety Function STO Configuration Safety Integrity Level according Performance Level according to IEC 61-508 to ISO-13849 STO.

630 Inverter output voltage



variable speed drive

Three-Phase Power Supply with Upstream Breaking via Line Contactor Connection diagrams conforming to standards EN 954-1 category 1 and IEC/EN 61508 capacity SIL1, stopping category 0 in accordance with ...

ATV630C31N4F

- ATEX compliant - IP21 version - Schneider Electric (Altivar Process 630 series) - Rated output 315kW / 590A - Supply voltage 323-484Vac (380Vac / 400Vac / 415Vac / 440Vac nom.) (3-phase (3P)) - with Modbus / ...



[ALTIVAR PROCESS ATV630 FUNCTION MANUAL Pdf Download](#)

What are common fault codes for the Altivar Process ATV630 and how do I clear them? The error code [Safety Function Error] SAFF is detected if there is an exceeded delay between STOA and STOB ...

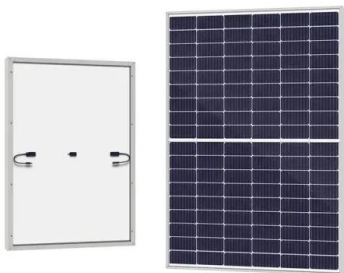
[What will the output voltage be from this inverter when supplied 9 or](#)

This is a circuit of DC to AC inverter I found online on a web site. Can anyone explain what will be output voltage if I give it 9 or 18 V from a DC battery?



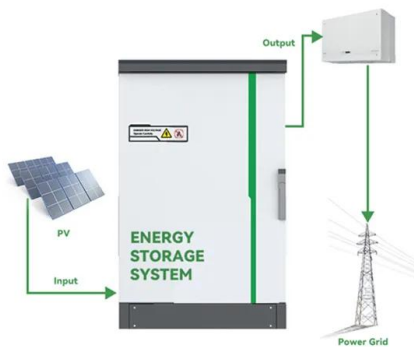
[Altivar Process 630 Variable Frequency Drives VFD](#)

Browse our products and documents for Altivar Process 630 Variable Frequency Drives VFD - ATV630 drives for process applications for 1HP to 500HP.



[1 Overview: 1.1 EM630 Model List and Technical Specifications](#)

Overview: Provides an overview of the EM630 model, technical specifications, rated voltage, and output current details for various power ratings. EM630 Operation: Details the operation ...



[ATV630-650 Installation manual, Schneider Electric](#)

ATV630-650 Installation manual Create your Schneider Electric account today Discover additional documents and tools reserved for our partners Find and download documentation for up to 100 ...

[Schneider ATV630D55N4 Data Sheet](#)

59.7 kVA at 480 V (heavy duty) 106 A at 2.5 kHz (normal duty) 88 A at 2.5 kHz (heavy duty) 116.6 A during 60 s (normal duty) 132 A during 60 s (heavy duty) Constant torque standard Variable torque standard Optimized ...



Contact Us

For catalog requests, pricing, or partnerships, please visit:
<https://xraydiamondsolutions.co.za>