

Apia smart pv-ess integrated cabinet dc



Apia smart pv-ess integrated cabinet dc

[100kWh Smart PV Ess Cabinet](#)

no circulating current, safer for use.



[DH200F-C& I All-in-one Systems-Dyness](#)

All-in-one design, integrated with PV. ESS and D.G., smart air-cooled heat dissipation, single cabinet capacity of 215kWh. Suitable for industrial and commercial scenarios, which supports functions like ...



[Tanzania smart pv-ess integrated cabinet](#)

All-in-one design, integrated with PV. ESS and D.G., smart air-cooled heat dissipation, single cabinet capacity of 215kWh. Suitable for industrial and commercial scenarios, which supports functions like ...



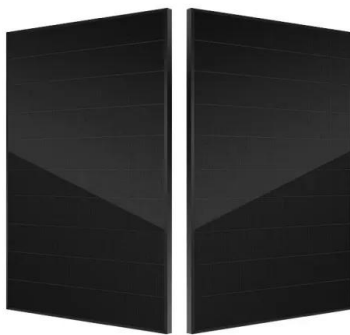
[215kWh Smart PV Ess Cabinet](#)

All-in-one Design Integrated PV and storage system with super wide PV input voltage Small footprint and IP54 protecting grade for outdoor installationenvironment; Safe & Reliable High-performance ...



[DS_Hybrid ESS Cabinet_Datasheet_V1.0-2025_EN \(Preliminary\)](#)

Innovative liquid cooling technology, extend battery life by 20% PV-ESS integrated, lower system cost AI dynamic MPPT, boosting power generation by 5% DC coupled solution, higher ...



[Datasheet ES64 ESS Cabinet Techon7Group](#)

This document may contain forecast information, including but not limited to future finances, operations, product series, new technologies, etc. Due to practice the uncertainty in the actual results may differ ...



[SolaX ESS-AELIO , C& I Energy Storage ESS Cabinet , 50kW/60kW](#)

With support for 200% PV oversizing and a maximum 40A DC input current, the Hybrid ESS Cabinet ensures high throughput for large-scale solar integration. Global MPP scanning maximizes energy ...



[ESS-GRID Cabinet Brochure EN-250401](#)

Integration of all energy storage system components, the output of which can be directly connected to the utility and photovoltaic systems. Multiple cabinets can be connected in parallel to realize the ...



[Max-Solaris Intelli-PV ESS Cabinet](#)

Max-Solaris Intelli-PV ESS Cabinet Multi-dimensional integration :Advanced DC coupling seamlessly integrates PV and storage; 20ms auto-switching between grid-connected and off-grid modes.

Contact Us

For catalog requests, pricing, or partnerships, please visit:
<https://xraydiamondsolutions.co.za>