

Coal Emergency Communication Command Base Station



Coal Emergency Communication Command Base Station



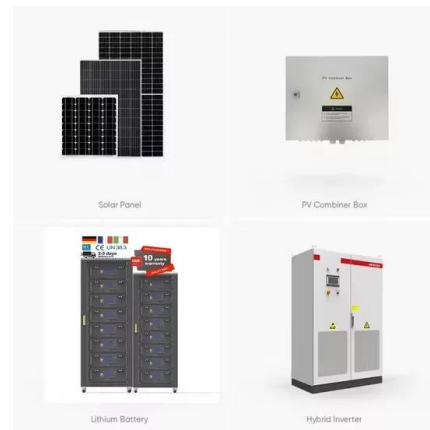
CN11225352A

The invention relates to a wireless multimedia monitoring and command system for coal mines, which includes three base stations: an out-well main station, an in-well main station and an



[Emergency Communication Plan for Mines \(Mines and coal mines refer ...](#)

A mine emergency communication scheme refers to a series of technical and equipment configurations used to ensure smooth communication between the mine site and the ground during emergencies.



[ITP Mining: Through the earth communications for the mining industry](#)

The demonstrated wireless range of communication is well over 100 meters through the earth. This range for the wireless communication technology allows one to transmit low frequency radio waves from base station to ...

[Base Emergency Communications System](#)

BECS manages, engineers, acquires, delivers, and supports CONUS non-tactical Land Mobile Radio (LMR), Computer-Aided Dispatch (CAD), Next Generation 9-1-1 (NG-911), First Responder

...



[Unified Mine Rescue Training \(Advanced\) Underground Coal and ...](#)

The Command Center receives a tremendous amount of information and will require secure communications equipment connected to underground phones, other surface phones, and should allow direct ...

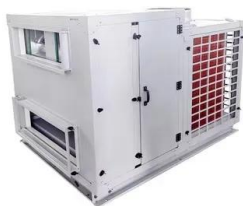
["The Integration of a Coal Mine Emergency Communication Network ..."](#)

Regulations, such as the MINER Act of 2006, require the installation of redundant and secondary communication systems to assure that contact can be established with coal miners who may become ...



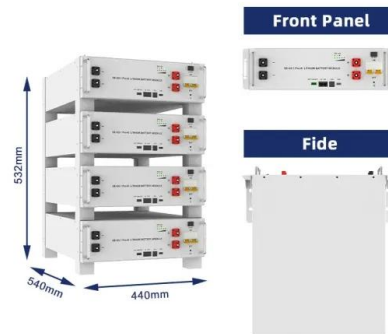
[OneMine , Advances In Mine Emergency Communications](#)

To address this problem, two-way, FM radios were built into the SCSR to improve the ability to communicate should the miners be separated over relatively short distances. The SCSR prototypes built and used in ...



Through-the-Earth, Post-Accident Communications

The objective is to provide a two-way communications system that can improve miners' ability to communicate with personnel on the surface after an underground mine accident or emergency.



Research on Mine Emergency Rescue Command System based on...

WebGIS is introduced to the mine disaster control and simulation and emergency rescue command system, combining perfectly with disaster information and emergency rescue information, it is ...

Contact Us

For catalog requests, pricing, or partnerships, please visit:
<https://xraydiamondsolutions.co.za>