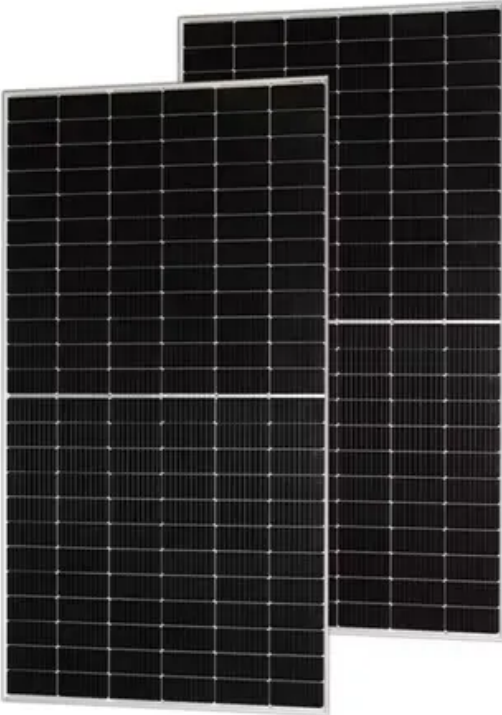


# **Construction price and cost of wind power project for communication base station**



## Overview

---

Most commercial-scale turbines installed nowadays are 2 MW in capacity and cost between \$3 and \$4 million to install. – Data and results are derived from 2023 commissioned plants. How much does a distributed wind energy system cost?

The residential and commercial reference distributed wind system LCOE are estimated at \$240/MWh and \$174/MWh, respectively. 4,5,6 Therefore, the low-carbon upgrade of communication base stations and systems is at the core of the. To determine which components represent the greatest potential for cost savings in a hybrid plant, we also examined the component-level scaling of the BOS cost according to project size for The input value used for onshore wind in AEO2023 was \$1,566 per kilowatt (kW), and for solar PV with. · Solar communication base station is based on PV power generation technology to power the communication base station, has advantages of safety and reliability, no noise and · Signal coverage quality and strength distribution in complex environments pose severe. A utility-scale wind turbine costs between \$1.

## Construction price and cost of wind power project for communication

---



### [Construction process of wind power in communication base station](#)

Dhaka communication base station wind power equipment installation The objective of these guidelines is to facilitate the development of wind power projects in an efficient, cost effective

### [Wind Energy Plant Project Report 2026: Setup Cost](#)

A wind energy plant, also known as a wind farm, is a facility that generates electricity by harnessing the power of wind through turbines. The plant consists of multiple wind turbines, each equipped with blades that rotate ...



### [Construction cost of wind-solar hybrid equipment room for ...](#)

The invention relates to a communication base station stand-by power supply system based on an activation-type cell and a wind-solar complementary power supply system.



### [Wind power process cost of communication base stations](#)

The 13th annual Cost of Wind Energy Review uses representative utility-scale and distributed wind energy projects to estimate the levelized cost of energy (LCOE) for land-based and offshore wind power plants in the ...



[Are communication wind power base stations expensive](#)

Do communication base station operations increase electricity consumption in China? Comparing data from 2021, 2025, and 2030, 41 we found that the electricity consumption due to communication base station ...



[Network communication base station wind power construction costs](#)

Single-variable sensitivity analysis for the representative systems is presented in the 2019 Cost of Wind Energy Review (Stehly, Beiter, and Duffy 2020). Analysts included the LCOE estimate for a large distributed wind ...



[How much does it cost to build a wind power station for a ...](#)

In this comprehensive analysis, we will explore the various factors influencing the cost of building a wind turbine, uncovering everything from initial installation expenses to ongoing maintenance costs.



