

GCL photovoltaic panel size specification table



Display screen
Linux operation system
quad-core processors
smooth and stable system



Overview

See the table below for available information we have about GCL System Integration Technology Co. GCL branded modules can be used for both off-grid and on-grid applications. With high-yield efficiency and long-term performance they are ideal for utility, commercial or residential roof-top installations. Ltd (002506 Shenzhen Stock) (GCL System) is part of GOLDEN CONCORD Group (GCL) which is an international energy company specializing in clean and sustainable power production. The. GCL offers a wide range of high-quality solar modules for a variety of application environments, including modules of standard 60/72-piece, dual-glass, high-efficiency polysilicon PERC, and half-cell etc. Solar Panel Series GCL-M10/72GDF 535-555W. On this page, you can find a complete list of solar panels from GCL and compare models side-by-side.

GCL photovoltaic panel size specification table

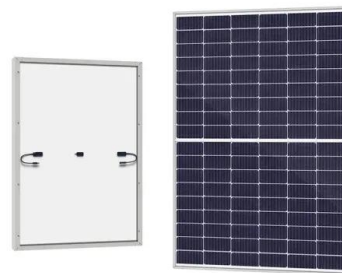


[GCL_Product_Flyer_GCL-P6-60-235_v3.0](#)

GCL branded modules can be used for both off-grid and on-grid applications. With high-yield efficiency and long-term performance they are ideal for utility, commercial or residential roof-top installations.

GCL Solar Panels

The EnergySage classification system incorporates technical specifications for solar panels, inverters and batteries to compare their performance, durability, warranty and overall quality.



Support Customized Product



[GCL photovoltaic panel model specifications](#)

This manual applies exclusively to the solar photovoltaic module (here in after referred to as Module) of GCL System Integration Technology Co., Ltd. (here in after referred to as GCLSI).

GCL-M6/72 GCL-M6/72H

GCL System Integration Technology Co. Ltd (002506 Shenzhen Stock) (GCL System) is part of GOLDEN CONCORD Group (GCL) which is an international energy company specializing in clean and sustainable ...



[GCL_Product_Flyer_GCL-P6-72-280_-Tainergy_ed4](#)

GCL branded modules can be used for both off-grid and on-grid applications. With high-yield efficiency and long-term performance they are ideal for utility, commercial or residential roof-top installations. GCL stands ...



[GCL System Integration Technology Co. Ltd. Solar Panel Information](#)

See the table below for available information we have about GCL System Integration Technology Co. Ltd. solar panels. We do our best to provide information such as the panel dimensions, datasheet, warranty ...



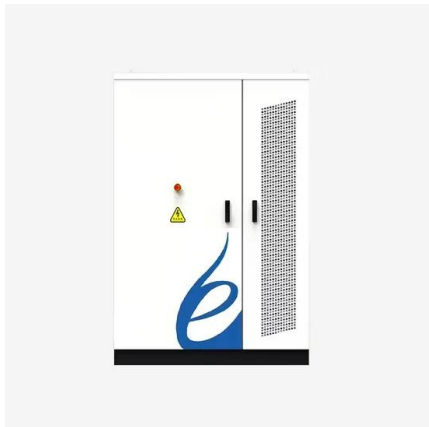
[GCL-Solar Module , PERC & N-Type Solar Module](#)

GCL is a Tier 1 component manufacturer, provides customers with high-quality clean energy one-stop services



[GCL photovoltaic panel polycrystalline specifications](#)

When you evaluate solar panels for your photovoltaic system, you will encounter three main categories of panel options: monocrystalline solar panels, polycrystalline solar panels, and thin-film solar panels.



GCL Solar PV Panel Size

Commercial & Industrial Solar PV Market Size. Commercial & Industrial Solar PV Market was valued at USD 57.1 billion in 2023 and is anticipated to grow at a CAGR of 6.4% from 2024 to

[GCL 450W Photovoltaic Panel Size: What You Need to Know Before](#)

The GCL 450W photovoltaic panel size measures 2,172mm × 1,303mm × 35mm (about 85.5" × 51.3" × 1.4"), making it slightly larger than your average 400W panel but packing 12.5% more power.



Contact Us

For catalog requests, pricing, or partnerships, please visit:
<https://xraydiamondsolutions.co.za>