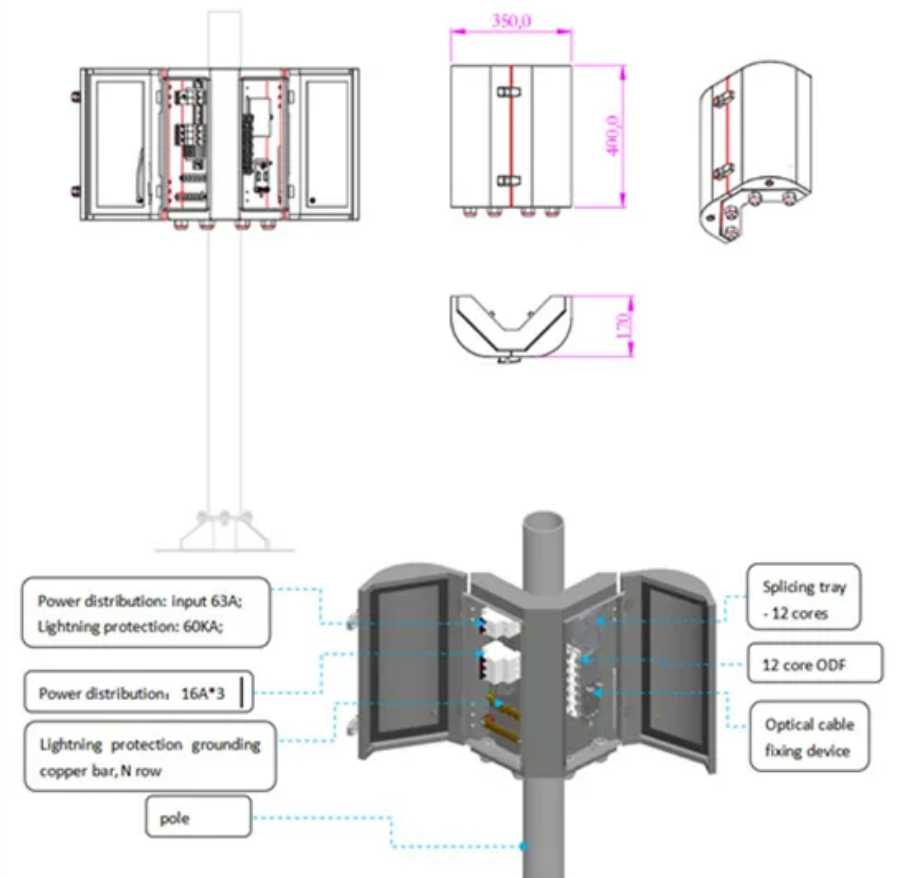


GoodWe PV inverter red light



Overview

E009 (High DC input voltage): Disconnect the DC PV inverter switch before restarting your inverter. If the error persists, consult a solar inverter repairs in Houston expert. The purpose of this document is to provide qualified installers with a comprehensive troubleshooting overview for GoodWe's hybrid and retrofit inverters. In many cases, it's just your system's way of letting you know it noticed something out of the ordinary. Highlight and supplement the texts. The overtemperature alert is triggered when the inverter 's internal temperature exceeds safe operational limits, which is a protective mechanism to prevent damage. Inverters are designed to operate within specific temperature ranges, typically between -13°F and 140°F (-25°C to 60°C). Like a car dashboard lit up like Christmas morning, these warnings range from "minor hiccup" to "call the cavalry."

GoodWe PV inverter red light



[GoodWe Inverter No Grid Detected](#)

Learn how to troubleshoot the GoodWe inverter's no grid detected issue and flashing red light.

[The 9 Most Common GoodWe Inverter Fault Codes](#)

We've got the 9 most common GoodWe inverter fault codes - because we know they're hard to find - and GoodWe tech support can be very hit-and-miss.



[Goodwe Solar Inverter Troubleshooting And Error Codes](#)

Goodwe inverters communicate faults through easily identified error codes on your device's display. Identifying these error codes is the first step toward rectifying the issue. Here are a few common ...



[Goodwe Overtemperature Alert](#)

Learn how to troubleshoot and resolve an overtemperature alert on a Goodwe inverter.



Goodwe Inverter Problems

This blog post tells you about common Goodwe inverter problems and how to tackle them effectively, ensuring that solar installations continue to operate at their peak performance



[GoodWe Solar Inverter Problems: Your Troubleshooting Guide](#)

Having GoodWe inverter problems? Those inverter fault codes are just the start, as we dive into quick & complex fixes for the problems that are worrying you.



[The 9 Most Common GoodWe Inverter Fault Codes](#)

We've got the 9 most common GoodWe inverter fault codes - ...



My inverter has a red light - what now?

Don't panic! Here's what to do... Seeing a red light on your solar inverter can be a little alarming--but it's not always a sign of something serious. In many cases, it's just your system's way ...



**Efficient
Higher Revenue**

- Max. Efficiency 97.5%
- Max. PV Input Voltage 600V
- 150% Peak Output Power
- 2 MPPT Trackers, 150% DC Input Overvoltage
- Max. PV Input Current 15A, Compatible with High Power Modules

**Intelligent
Simple O&M**

- IP65 Protection Degree: support outdoor installation
- Smart ITC Curve Diagnosis Function: locate PV string faults accurately and automatically detect faults
- DC & AC Type II SPD: prevent lightning damage
- Battery Reverse Connection Protection

**Flexible
Abundant Configuration**

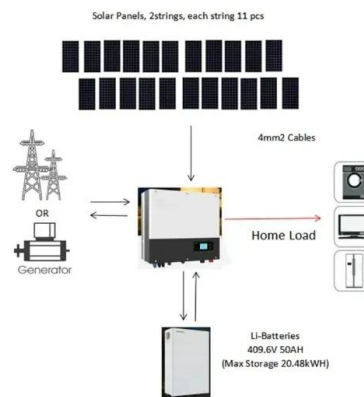
- Plug & Play, EPS Switching Under 10ms
- Compatible with Lead Acid and Lithium Batteries
- Max. 6 units Inverters Parallel
- AFCI Function (Optional): when an arc fault is detected the inverter immediately stops operation

When Your GoodWe PV Inverter Fault Light Starts Flashing: A Solar

That glowing red GoodWe PV inverter fault light isn't just decoration - it's your solar system's version of Morse code. Like a car dashboard lit up like Christmas morning, these warnings range from "minor ...

Troubleshooting Guide

The purpose of this document is to provide qualified installers with a comprehensive troubleshooting overview for GoodWe's hybrid and retrofit inverters. It explains the possible errors, how to identify ...



Contact Us

For catalog requests, pricing, or partnerships, please visit:
<https://xraydiamondsolutions.co.za>