

How many acres does a 1GW solar power plant occupy



Overview

To generate 1 GWh of solar power, approximately 2.2 million acres (17,500 square miles) for 4 million GWh of clean energy. When diving into the solar farm field, a burning question often surfaces: How much land does one need to launch a 1 MW solar power plant?

Well, buckle up because we're about to break it down. Generally speaking, for every megawatt (MW) of solar power you aim to generate, you'll need anywhere from 3,240 to 35,000 acres. A conservative estimate for the footprint of solar development is that it takes 10 acres to produce one megawatt (MW) of electricity. Learn why estimates range from 3,240 to 35,000 acres. You've probably heard conflicting numbers about photovoltaic land use – some. It takes 2.97 acres of solar panels to generate a gigawatt hours of electricity (GWh) per year, which is the same as a GWh.

How many acres does a 1GW solar power plant occupy



Many Definition & Meaning

Many definition: Amounting to or consisting of a large indefinite number.

[How Many Acres Of Solar Panels Per Megawatt?](#)

How Many Acres Of Solar Panels To Power A House? A large fixed tilt solar PV plant that generates 1 gigawatt-hour (GWh) per year requires, on average, 2.8 acres for solar panels.

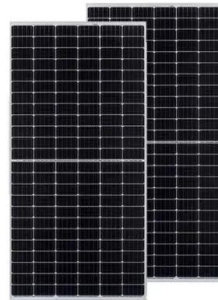


[How Much Land Does Renewable Energy Take Up](#)

To generate 1 GWh of solar power, approximately 2.8 acres of land is required, translating to about 11.2 million acres (17,500 square miles) for 4 million GWh of clean energy.

MANY Definition & Meaning

The meaning of MANY is consisting of or amounting to a large but indefinite number. How to use many in a sentence.



MANY , English meaning

We use many to refer to a large number of something countable. We most commonly use it in questions and in negative sentences: ...

[How Much Land For 1 Mw Solar Farm: A Quick Guide](#)

Discover how much land for 1 MW solar farm is required, factors influencing size, and maximizing efficiency in our comprehensive guide.



[MANY definition and meaning , Collins English Dictionary](#)

You use many to indicate that you are talking about a large number of people or things. I don't think many people would argue with that. Not many films are made in Finland. Do you keep many books ...



[many , Dictionaries and vocabulary tools for English](#)

many or much? Many is used with words for things that we can count. Much is used with words for things that we cannot count. Compare: Do you have many things to do today? Do you have much ...



[How Much Space Does A Solar Power Plant Take Up?](#)

Specifically, a large fixed tilt solar PV plant generating 1 GWh per year will typically require about 2. 8 acres. Smaller installations, such as a 100 kW solar farm, can function on 0. 8 to 1 acre, while a larger ...

[How Much Land Is Needed for 100% Renewable Energy? \(Latest ...](#)

A 1 GW solar farm, capable of powering about 200,000 homes, would require roughly 6,000 to 8,000 acres. While this may seem significant, such projects can be strategically placed in less populated areas to avoid ...

- LiFePO₄ Battery,safety
- Wide temperature: -20~55°C
- Modular design, easy to expand
- The heating function is optional
- Intelligent BMS
- Cycle Life:> 6000
- Warranty:10 years



[How Much Land Does a 1GW Solar Farm Require? Key Factors and Real...](#)

Meta Description: Discover the land requirements for 1GW photovoltaic installations, including efficiency variables, layout considerations, and global case studies. Learn why estimates range from 3,240 ...

[How many acres does solar power generation occupy?](#)

Current estimates suggest that large-scale solar installations can occupy extensive plots of land, with approximately 5 to 10 acres needed per megawatt generated.

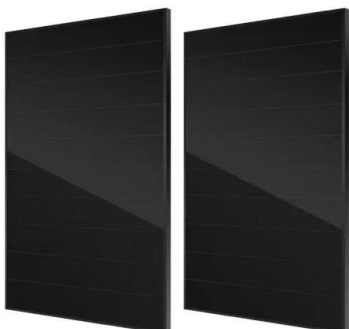


[Many - meaning, definition, etymology, examples and more -- Self](#)

Explore the word "many" in detail, including its origins, variations, and common phrases. Learn about its historical and contemporary usage, as well as its impact on language and culture.

[Land-Use Requirements for Solar Power Plants in the United States](#)

For direct-area requirements the generation-weighted average is 2.9 acres/GWh/yr, with 49% of power plants within 2.5 and 3.5 acres/GWh/yr. On a capacity basis, the total-area capacity-weighted average is 8.9 ...



[MANY Definition & Meaning , Dictionary](#)

MANY definition: constituting or forming a large number; numerous. See examples of many used in a sentence.

1 GW of continuous Solar Power would need 33,355 acres of land

Extensive Land Use: The project would require about 13,490 hectares (33,355 acres) of land for the solar panels. High Initial Investment: The total estimated cost is around \$24.4 billion,



Contact Us

For catalog requests, pricing, or partnerships, please visit:
<https://xraydiamondsolutions.co.za>