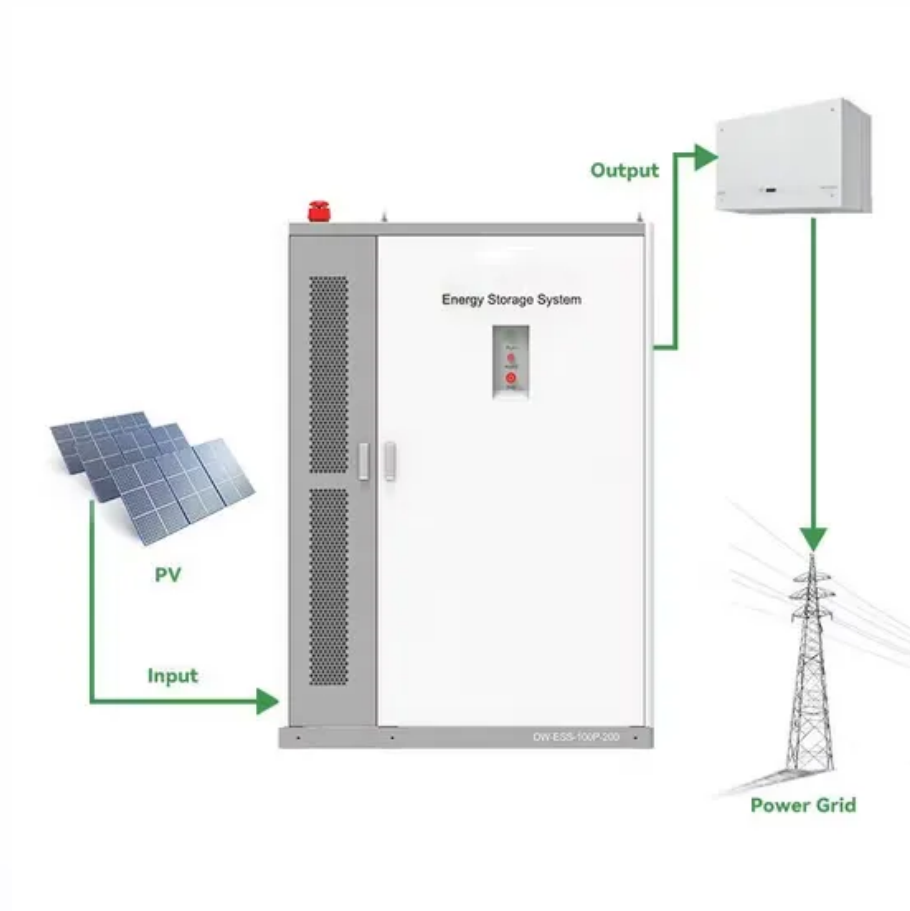


# How many volts of power does the base station need



## Overview

---

Yes, with a proper 12V DC power supply (3-5 amps minimum) and base antenna system. However, dedicated base stations typically offer better features, ergonomics, and performance for home use. Typical range is 15-25 miles for local communications. It requires a license in United States but can be used license-free in Canada. ----- According to rightchannelradios. To power a CB radio at home, you'll need a power supply module that provides 12 to 14 volts of direct current (DC). 8V?

It's the average voltage that an automobile electrical system produces, allowing your radio to be powered in your vehicle or at home. With a few exceptions—like amplifiers—you won't plug your gear directly into. The power, advanced features and versatility of the typical mobile radio allows it to be easily converted into a base station. It can be placed on a table or desk without a mount or hardware, connected to a proper antenna, powered on, and it's ready to go on the air. Of course, there is a little.

## How many volts of power does the base station need

---

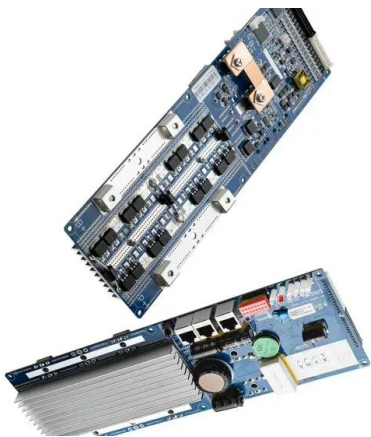


### [Understanding Mobile CB Radio Usage in Homes : Cobra Electronics](#)

Yes, a mobile CB can be used as a base station. You will need a DC power supply and a base station antenna. The power supply should have an output between 12 to 14 volts DC. The power supply must ...

### [Choosing a Power Supply for Your Station](#)

Basic models just change 125VAC to 13VDC. Typical add-on features include volt/amp meters, multiple power outputs, noise offset controls to minimize RFI, variable voltage output controls, and over ...



### [How to Set Up a Base Station CB System: A Complete Installation Guide](#)

Power Requirements: Base stations operate on 120V AC power rather than 12V DC, requiring either built-in power supplies or separate AC-to-DC converters. Size and Ergonomics: Designed for desktop ...

### [Base Station Power Recommendations](#)

Unlikely a dedicated 120 volt AC circuit is necessary. It'd be expensive and excessive. If you were building out a purpose built "radio room" where you expected to have a lot of transmitting gear, it might make ...



[what kind of power supplies do you guys use for base station](#)

That radio should run from 11.73v to 15.87v but at 12v and 5 amps, you'll probably put too much demand on that little power supply. I use a switching power supply similar to this one. There are many ...



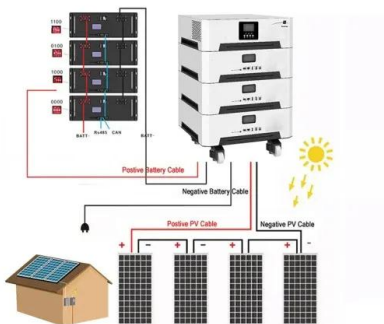
[How To Power And Connect A CB Radio To a Home Base: Step-By-Step...](#)

When setting up a CB radio at home, you'll need a power source that provides 12 to 14 volts of direct current (DC). Most CB radios are designed for vehicles running on DC 12-volt power systems, but you ...



[Choosing the right size power supply for your radio](#)

How do you power a mobile radio for use as a base station? Get a power supply. But this isn't a cut and dry, one-size-fits-all sort of thing. Here's how to choose the right power supply for your radio.



## Your First Station

But if you want to operate the radio without the battery, you may want to invest in a small dc power supply--13.8 volts (V) with a current capacity of about 3 amps (A) will do the job nicely. You can find these ...



[What's enough power for a base station? : r/gmrs](#)

What's enough power for a base station? I'm looking at putting a small base station into the kitchen of our ranch home for communicating with the HTs outside. Distance is usually within a mile or two, ...

[Power supply for base station.](#)

The terminal voltage starts out around 13.3 to 13.4 volts and remains around 13 volts for 70 to 80 percent of the discharge capacity. That makes for a better match to the typical specifications for mobile radio gear.



## Contact Us

---

For catalog requests, pricing, or partnerships, please visit:  
<https://xraydiamondsolutions.co.za>