

**How many watts of solar energy
are there in 26 square meters**



Overview

Here's what's shocking: A single square meter of solar panel can generate anywhere from 150 to 250 watts under ideal conditions. But "ideal" rarely exists in real life. Your roof's orientation, local climate, shading, and even the dust on your panels can slash that output. The answer lies in something most solar salespeople never properly explain— solar irradiance and your actual energy potential per square meter. But "ideal" rarely exists. Solar panels have become a cornerstone of renewable energy, but many wonder: How much power can a single square meter of solar panels actually produce?

Let's break down the science behind photovoltaic efficiency. As per the recent measurements done by NASA, the average intensity of solar energy that reaches the top atmosphere is about 1,360 watts per square meter. You can calculate the solar power per square meter with the following. This result indicates that each square meter of the area contributes approximately 6.

How many watts of solar energy are there in 26 square meters



[Solar Power per Square Meter Calculator](#)

Solar Energy Potential: On average, Earth's surface receives about 1,000 watts of solar power per square meter under direct sunlight. Wind Turbines: Modern wind turbines can produce up ...

[Solar Power per Square Meter Calculator](#)

As per the recent measurements done by NASA, the average intensity of solar energy that reaches the top atmosphere is about 1,360 watts per square meter. You can calculate the solar ...



Solar Energy Calculator

Using the Solar Energy Calculator, you can estimate the energy potential of your solar setup and make informed decisions about adopting this renewable energy solution.

[How many watts is 1 square meter of solar energy? , NenPower](#)

Countries with expansive sunny climates, such as Australia and parts of the United States, can achieve impressive solar energy yields, often exceeding 250 watts per square meter under ...



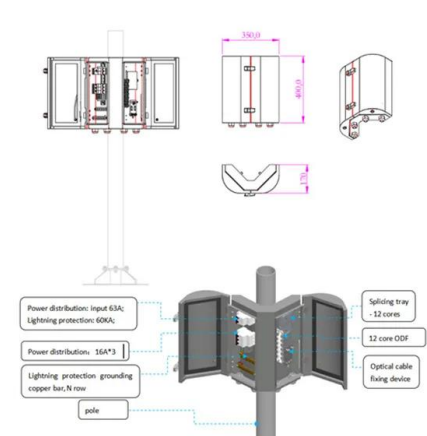
[Solar Power Per Square Meter Calculator](#)

Calculate solar panel energy output per square meter. Get accurate daily, monthly, and annual production estimates based on location, panel specs, and system losses.



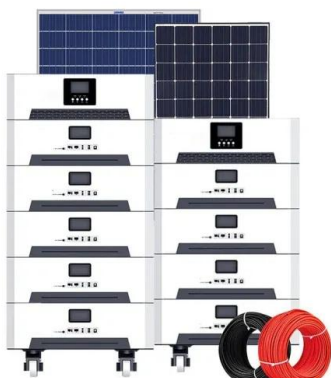
[Solar Energy Per Square Meter: How Much Power Can You Get?](#)

This article explores solar energy per square meter and the various factors that influence energy output, such as location, climate, and panel efficiency. It provides crucial calculations, ...



[Solar Panel Watts Per Square Meter Explained](#)

Solar panel watts per square meter (W/m) measures the power output of a solar panel based on its size. Compare solar panels to see which generates most electricity per square meter. A higher W/m value ...



Solar Calculator

Calculate how much power you need with these solar calculators to estimate the size and the cost of the solar panel array needed for your home energy usage.



[Solar Panel Output Per Square Meter](#)

Discover how much electricity solar panels generate per square meter, explore efficiency factors, technology comparisons, and future innovations in photovoltaic energy.

[Solar Panel Wattage Calculator](#)

The utility of this calculator is profound, benefiting both homeowners considering solar installations and professionals within the solar industry. It assists in: System sizing: Accurately determining the ...



Contact Us

For catalog requests, pricing, or partnerships, please visit:
<https://xraydiamondsolutions.co.za>