

# LTE communication technology base station



## Overview

---

An LTE base station, also known as an eNodeB (evolved Node B), is a crucial element in LTE networks responsible for communicating directly with mobile devices. This article explores what LTE. The E-UTRAN handles the radio communications between the mobile and the evolved packet core and just has one component, the evolved base stations, called eNodeB or eNB. It enables wireless transmission of data, voice, and multimedia services by managing the radio. A base station connects your phone to the network. Base stations form the backbone of 4G LTE and 5G networks. But how do these networks actually work?

Let's delve into the fascinating world of LTE networks.

## LTE communication technology base station

---



### [What is a Base Station in Telecommunications?](#)

Discover the role and functionality of a base station in telecommunications networks. Learn how these critical components manage communication between mobile devices and the network, ensuring ...

### [Understanding Base Stations in Mobile Communication](#)

In this article, we explore several key elements of base stations, such as their definitions, historical background, and present-day functionality. By delving into the operational mechanics, readers can ...



### **LTE Network Architecture**

An LTE Base Station System (commonly referred to as eNodeB) is a critical component of 4G LTE mobile networks that facilitates wireless communication between user devices and the ...



### [LTE Base Station System Market](#)

A Long-Term Evolution (LTE) Base Station System is a critical component of the LTE network infrastructure, providing wireless communication services to users' devices within a specific coverage ...



### What Is A Base Station?

A base station is an integral component of wireless communication networks, serving as a central point that manages the transmission and reception of signals between cellular networks ...

### [What Are the Top 10 LTE Base Station System Companies in 2025?](#)

An LTE Base Station System (commonly referred to as eNodeB) is a critical component of 4G LTE mobile networks that facilitates wireless communication between user devices and the ...



### [What is LTE Base Station System? Uses, How It Works & Top](#)

What is an LTE Base Station System? An LTE Base Station System is a set of hardware and software components that facilitate wireless communication between mobile devices and the core

## LTE Base Stations: The Backbone of Mobile Connectivity

What is an LTE Base Station? An LTE base station, also known as an eNodeB (evolved Node B), is a crucial element in LTE networks responsible for communicating directly with mobile ...

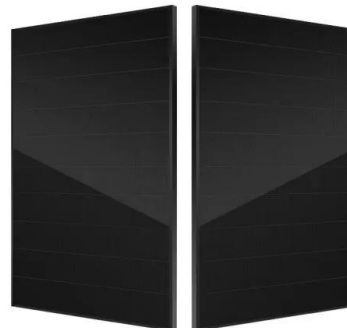


## What are Base Station in Telecommunications?

The Backbone of Wireless Networks A base station connects your phone to the network. It acts as a hub between mobile devices and the core system. Base stations form the backbone of ...

## Understanding How Cellular LTE Networks Work

The Role of the Base Station The base station, also known as a cell tower, plays a vital role in cellular networks. It serves as the link between the mobile device and the network. The base station receives ...



## **LTE Network Architecture**

The E-UTRAN handles the radio communications between the mobile and the evolved packet core and just has one component, the evolved base stations, called eNodeB or eNB.



## Contact Us

---

For catalog requests, pricing, or partnerships, please visit:  
<https://xraydiamondsolutions.co.za>