

Photovoltaic panel 2 8 square meters



Overview

Solar cell dimensions are typically around 189 x 100 x 3.6 to 2 square metres per panel. One of the most important things to consider when getting solar panels for your home is the specific solar panel size and dimensions. The real constraints are typically usable roof space after accounting for required 3-foot setbacks and obstruction clearances. Here is a quick and easy way to go about it.

Photovoltaic panel 2 8 square meters



[Solar Panel Size & Dimensions Guide 2025 . Complete Specs](#)

In this comprehensive guide, you'll learn everything you need to know about solar panel sizing, from standard dimensions to weight considerations, helping you determine the perfect solar ...

[Solar Panel Sizes, Dimensions & Weight . Solar Choice](#)

What are the different solar panel sizes and how many can you fit onto your roof? Our guide gives you the information you need.



[Solar Panel Dimensions and Sizes: Complete Guide](#)

Most solar panels produce an output between 250 watts to 400 watts, although some panels have been known to exceed 400 watts. Based on that, you can use the solar system calculation formula to ...



[Guide to Solar Panel Sizes & Dimensions \(October 2025\)](#)

Solar panel sizes and wattage range from 250W to 450W, taking up 1.6 to 2 square metres per panel. One of the most important things to consider when getting solar panels for your ...



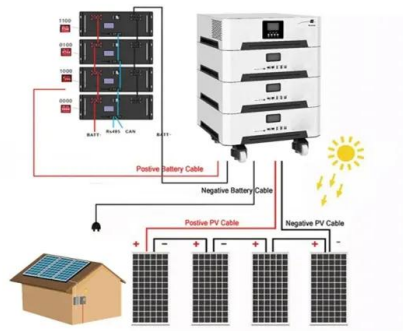
[How to Calculate the Surface Area Required by Solar Panels](#)

But wait, are you sure you have enough space in your garden or your backyard or your rooftop to install the solar panels? How can you do a rough estimate of the area required by the solar ...



[Solar Panel Size and Weight: How Big Are Solar Panels?](#)

Residential solar panels consist of around 60 solar cells and are roughly 5.5 feet long and 3 feet wide. Solar panels usually weigh about 40 to 50 pounds. Commercial solar panels are generally ...



[Solar Panels Sizes and Weights \(All Sizes\)](#)

Use our solar panel system size calculator to determine how many solar panels you need to power your home.

[Solar Panels Sizes and Weights \(All Sizes\)](#)

72-cell solar panels that are 28 kilograms and measure 2.03 meters long by 1.01 meters wide have an area of 2.05 square meters. Therefore, they weigh 13.66 kilograms per square meter.



[Solar Panel System Size Calculator](#) , [Solar Calculator](#)

Use our solar panel system size calculator to determine how many solar panels you need to power your home.



[Calculate Your Solar Panel kWh Output Before You Buy \(Free ...](#)

Grab your solar panel specs and electricity bill--you're about to discover exactly how many kilowatt-hours your solar setup can generate and whether it'll actually cover your energy ...



Solar Panel Calculator

Use our solar panel calculator to find your solar power needs and what panel size would meet them.



Contact Us

For catalog requests, pricing, or partnerships, please visit:
<https://xraydiamondsolutions.co.za>