

Overview

In the table below, we assume a total installation weight of 3 lbs per square foot across various system sizes, each using 400 W solar panels. In general, most rooftops can handle the weight of a solar panel installation, with some exceptions. Understanding these specifications is crucial for determining roof. Roof Load Capacity is Rarely a Limiting Factor: Solar panels add only 3-4 pounds per square foot to roof load, well within the 20+ pound capacity of most residential roofs. The real constraints are typically usable roof space after accounting for required 3-foot setbacks and obstruction clearances. All individual solar panels weigh less than 100 lbs. However, solar systems with 8kW rated capacity and above add more than 1,000 lbs to your roof. 5 lbs to. anels to know: 60-cell,72-cell,and 96-cell.

Photovoltaic panel weight specification table

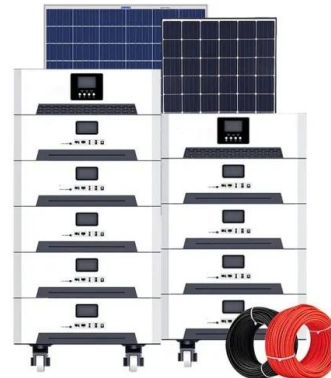


[Solar Panel Size & Dimensions Guide 2025, Complete Specs](#)

Complete guide to solar panel sizes and dimensions. Compare 60-cell vs 72-cell panels, weights, roof space requirements, and installation specs for 2025.

[Photovoltaic Panel Size, Specifications, and Weight: A ...](#)

When planning a solar energy system, knowing the photovoltaic panel size, specifications, and weight is critical for design, logistics, and installation. Whether you're working on residential rooftops or utility ...



[average photovoltaic solar panel weight guide](#)

The average photovoltaic solar panel weight guide is essential for everyone involved--from the homeowner worried about roof loading to the logistics company planning freight, ...



[Photovoltaic panel weight specification table](#)

Starting your solar energy journey means understanding solar panel size chart and solar panel dimensions. This is vital for everyone, from home to business owners, looking



[The Ultimate Guide to Solar Panel Size, Weight & Wattage \(2025\)](#)

Find the exact solar panel size & weight in our 2025 guide. Our complete chart compares models by ft/cm and lbs/kg to help you plan your installation.



[How Much Do Solar Panels Weigh? 1.30 - 2,608.7 lbs Chart](#)

We have sampled 6 different solar panels with wattages ranging from 100W to 400W, and total weights ranging from 11.5 lbs to 51.8 lbs, to figure out what is a typical solar panel weight per square foot.



[Centralized photovoltaic panel weight table](#)

Weight per Unit. The weight of a solar panel per unit is an important consideration when deciding which size is best for your home, which we will discuss further in

[2025 Solar Panel Specs Guide: Choose the Best Panels](#)

Understanding solar panel specs is the key to picking a system that fits your home, budget, and climate. We've split the 18 parameters into two groups: Core Parameters for everyday users and Advanced ...



[Photovoltaic panel specifications and weight table](#)

Since the average residential solar panel weighs about 45 pounds and occupies about 18 square feet, the following calculations can be used to determine the approximate size



[Solar panel size and weight: everything you need to know](#)

Learn everything about solar system size, solar panel dimensions, and how much solar panels weigh in this complete guide for residential photovoltaic installations.



Contact Us

For catalog requests, pricing, or partnerships, please visit:
<https://xraydiamondsolutions.co.za>