

# Photovoltaic support foundation prefabrication ratio



## Overview

---

Key considerations for solar installations include foundation depth (typically 1/6 of pole height plus 2 feet), concrete strength, reinforcement design, and soil bearing capacity. Proper foundation engineering is crucial for long-term stability of solar lighting systems. This guide breaks down specifications that determine solar system stability, energy output, and ROI – complete with real-world data and installation best practices. Why Support Ratios Make or Break Solar Projects Imagine you want to know why engineers obsess over photovoltaic panel support ratios?

. Calculations, considering deformation and bearing capacity. The study confirms the reliability of the PHC pile foundation as a support structure for heliostats, aiming to offer valuable insights for practical applications. The selected solar panel is known as Top-of-Pole Mount (TPM), where it is designed to install quickly and provide a secure mounting structure for PV modules on a variety of considerations, most importantly what foundation to choose.

## Photovoltaic support foundation prefabrication ratio

---



### [Design specifications for photovoltaic support foundation](#)

To optimize PV power plant foundations, your geotechnical engineer needs to collect load-test data in the field, and you need to base your foundation design on an analysis of these data.

### [Photovoltaic power station support foundation construction](#)

The invention relates to a solar photovoltaic power station foundation construction method which comprises the following steps: (1) installing a pile hammering machine; (2) moving the piling

LPR Series 19  
Rack Mounted



### [Photovoltaic support foundation calculation](#)

Selecting the right foundation for a ground-mounted solar PV installation is critical for its success as the use of an incorrect foundation can result in premature refusal,

### [Photovoltaic support micro pile foundation calculation](#)

The PHC (pre-stressed high-strength concrete) pile foundation, serving as an innovative supporting structure for solar power stations, is subjected to complex loading



 LFP 280Ah C&I

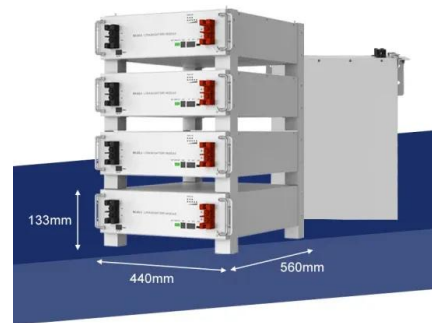
### [Prefabricated Pile Photovoltaic Support Calculation](#)

Is a PHC pile foundation a reliable support structure for heliostats? A comprehensive design program is proposed based on field tests and numerical simulations, considering deformation and bearing capacity.



### [Photovoltaic support foundation construction specifications](#)

The Federal Energy Management Program (FEMP) provides this tool to federal agencies seeking to procure solar photovoltaic (PV) systems with a customizable set of technical specifications.



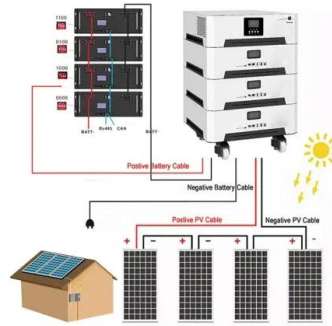
### [Photovoltaic System Foundations: Key Factors for Optimal Selection](#)

These factors collectively guide the selection of the most appropriate foundation type for photovoltaic installations, ensuring efficiency in both implementation and long-term operation while ...



### [Photovoltaic Panel Support Ratio Specifications: Key Factors for Solar](#)

Want to know why engineers obsess over photovoltaic panel support ratios? This guide breaks down specifications that determine solar system stability, energy output, and ROI - complete with real ...



### [Solar Panel Foundation Design Guide, Installation & Engineering](#)

Key considerations for solar installations include foundation depth (typically 1/6 of pole height plus 2 feet), concrete strength, reinforcement design, and soil bearing capacity. Proper ...

### [Photovoltaic panel support base prefabrication specifications](#)

In the photovoltaic (PV) solar power plant projects, PV solar panel (SP) support structure is one of the main elements and limited numerical studies exist on PVSP ground mounting steel frames to be a ...



## Contact Us

For catalog requests, pricing, or partnerships, please visit:  
<https://xraydiamondsolutions.co.za>