

The energy storage in the incoming cabinet cannot be connected

12.8V6Ah



Nominal voltage (V):12.8
Nominal capacity (ah):6
Rated energy (WH):76.8
Maximum charging voltage (V):14.6
Maximum charging current (a):6
Floating charge voltage (V):13.6~13.8
Maximum continuous discharge current (a):10
Maximum peak discharge current @10 seconds (a):20
Maximum load power (W):100
Discharge cut-off voltage (V):10.8
Charging temperature (°C):0~+50
Discharge temperature (°C): -20~+60
Working humidity: <95% R.H (non condensing)
Number of cycles (25 °C, 0.5c, 100%dod): >2000
Cell combination mode: 32700-4s1p
Terminal specification: T2 (6.3mm)
Protection grade: IP65
Overall dimension (mm):90*70*107mm
Reference weight (kg):0.7
Certification: un38.3/msds

Overview

To provide practical guidance, the following sections detail the five most common failures of telecom and energy storage cabinets by Cytech, offering step-by-step diagnostic and resolution methods. Top 5 Common Telecom Cabinet Failures and Analysis 1. To give you a clearer view of Cytech's cabinet. Transformer incoming cabinet energy storage mission capacity of a regional electric power grid. With the global energy storage market hitting \$33 billion annually [1], these systems are becoming the backbone of modern power infrastructure. Did you know that 32% of solar power system failures in 2024 were traced to improper cabinet connections?

Let's explore how to get this right. You know what they say—"A.

The energy storage in the incoming cabinet cannot be connected



 LFP 12V 100Ah

INCOMING CABINET FAILED TO STORE ENERGY ALARM

Well, here's the shocker: substation cabinets physically cannot store energy. These metal enclosures primarily house circuit breakers, transformers, and monitoring equipment - components designed for ...

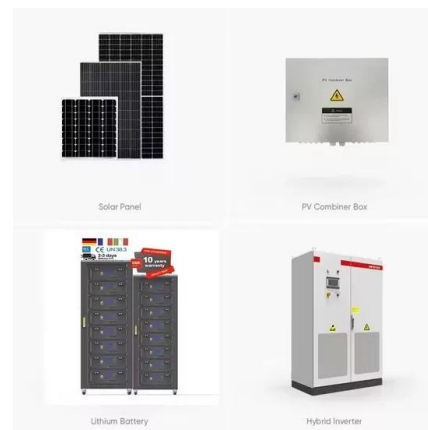


Why doesn't the incoming line cabinet store energy

Battery Energy Storage Systems (BESS) can store energy from renewable energy sources until it is actually needed, help aging power distribution systems meet growing

Energy Storage Cabinet Wiring Tutorial: A Step-by-Step Guide with

Let's face it - wiring an energy storage cabinet isn't as simple as plugging in a toaster. With the global energy storage market hitting \$33 billion annually [1], these systems are becoming ...



Integrated energy storage cabinets

To use an integrated energy storage cabinet, install batteries and related equipment into designated compartments. The cabinet provides a centralized and secure storage solution for energy storage ...



[How to Connect an Energy Storage Cabinet: A Step-by-Step Guide for](#)

Connecting energy storage cabinets isn't just about plugging in cables--it's the backbone of efficient renewable energy systems. Did you know that 32% of solar power system failures in 2024 were ...

[Telecom & Energy Storage Cabinet Failures Explained , Practical](#)

Cytech provides expert guidance on telecom cabinet failures and energy storage cabinet failures, offering practical engineering solutions for overheating, moisture intrusion, wiring issues, and ...



[Incoming cabinet failed to store energy alarm](#)

The rack-type energy storage system supports user-side energy response scheduling and remote duty operation and maintenance, supports parallel/off-grid operation, and can be widely used in data ...



What to do if the energy storage cabinet cannot be charged

No use for a long time: The energy storage cabinet has not been activated for more than 3 consecutive months (The cabinet must be charged to 50% SOC before being suspended from



How to configure the combiner cabinet in energy storage

Reasonable configuration and standardized installation of combiner cabinets can effectively ensure the stable operation of energy storage systems, improve their work efficiency, enhance

Transformer incoming cabinet energy storage failure

Proactively Prevent Critical Transformer Failures. As one of the most critical and costly elements of any renewable energy project, the Main Power Transformer (MPT) is critical for reliable and



Contact Us

For catalog requests, pricing, or partnerships, please visit:
<https://xraydiamondsolutions.co.za>