

The switch light of solar inverter flashes



Overview

A blinking green LED typically indicates that the inverter is functioning properly and generating AC power. The blink rate corresponds to the percentage of output: faster blinking means higher production. Your inverter has a switch and three colored LEDs that indicate system information, such as errors or performance. The following table summarizes the meaning of each light: The lights can also flash or be solid, depending on the status of the system. A SolarEdge green light blinking typically means the system is generating power, but when the green light disappears or a red light appears, you may see unfamiliar. LED signals indicate the operating state of SMA inverters. Panels produce DC power, which is fine for batteries but incompatible with most home appliances.

The switch light of solar inverter flashes



[The light flashes when the photovoltaic inverter is connected](#)

Further, it is identified that for a solar photovoltaic (PV) inverter the power module construction intricacy and the complex operating conditions may degrade the reliability

[Solar Inverter LED Behavior](#)

Solar Inverter LED Location. System is not powered by AC or system needs maintenance. The Solar Inverter LED should not be OFF when functioning.



[SolarEdge Inverter Status Light Guide](#)

Ensure the inverter's twist knob is set to the "ON" position. Verify that the solar breaker is flipped to the "ON" position. For installations with multiple SolarEdge inverters, check the subpanel to ...

[Inverter Status and System Performance Indications](#)

Your inverter has a switch and three colored LEDs that indicate system information, such as errors or performance. The following tables detail the possible LED and switch combinations, and what they ...

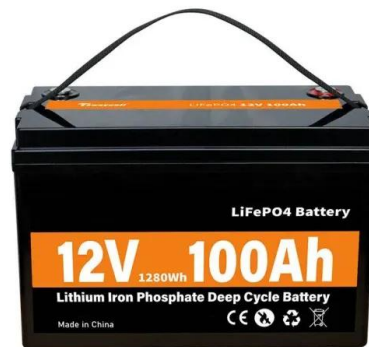


[What Does The Fault Light Mean On A Power Inverter?](#)

The inverter is switched ON and runs for a while before the Red light illuminates, and the fan stops running. The problem may be on the AC output or the DC input side of the inverter.

[Common Solar Inverter Problems and How to Fix Them](#)

Solar inverter problems can cause performance dips, system outages, and even long-term damage to your setup if left unaddressed. In this article, we'll break down the most common ...



ESS

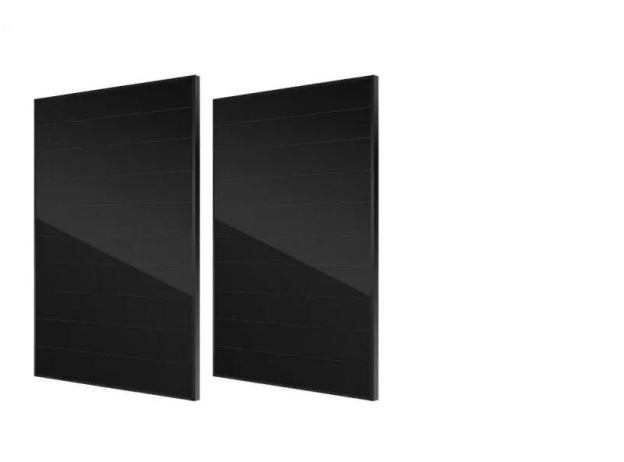


[SolarEdge Inverter Flashing Green Light? \(Here's why\)](#)

A flashing green light on a SolarEdge inverter typically indicates that the inverter is in the process of being initialized or is searching for a connection to the utility grid.

[SolarEdge Error Codes & Fault Codes: Troubleshooting Guide](#)

A SolarEdge green light blinking typically means the inverter is operating correctly and generating AC power. The speed of the blink corresponds to the level of power output.



[The photovoltaic inverter run light flashes](#)

Inverter failure can be caused by problems with the inverter itself (like worn out capacitors), problems with some other parts of the solar PV system (like the panels), and even by problems with elements ...

[Explanation of the LED Signals of Inverters](#)

LED signals indicate the operating state of SMA inverters. The following table contains an overview of the LED signals of SMA inverters and their explanations. Waiting for feed-in conditions The ...



Contact Us

For catalog requests, pricing, or partnerships, please visit:
<https://xraydiamondsolutions.co.za>