

# What communication base stations wind power does the UK use



## Overview

---

We investigate the use of wind turbine-mounted base stations (WTBSs) as a cost-effective solution for regions with high wind energy potential, since it could replace or even outperform. Such base stations are powered by small wind turbines (SWT) having nominal power in the range of. In the UK, Vodafone has been working with Crossflow Energy for two years to use the latter's wind turbine technology in combination with solar and battery technologies to create a self-powered mobile network tower. How much energy does a base station use?

A typical 3-sector base station site. Two of the wind turbines at the Black Law Wind Farm in South Lanarkshire, Scotland The United Kingdom is the best location for wind power in Europe and one of the best in the world. [2][3] The combination of long coastline, shallow water and strong winds make offshore wind unusually effective. Improved Model of Base Station Power System for the.

## What communication base stations wind power does the UK use

---



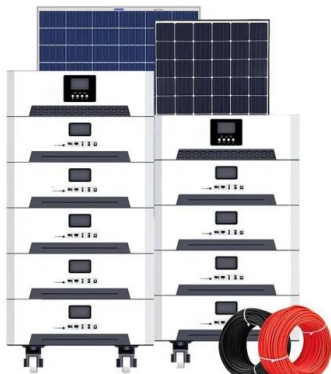
### [The connection between communication base station and wind ...](#)

Discover how hybrid energy systems, combining solar, wind, and battery storage, are transforming telecom base station power, reducing costs, and boosting sustainability.

### [Wind power in the United Kingdom](#)

OverviewHistoryWind farmsEconomicsVariability and related issuesPublic opinionPoliticsRecords

The United Kingdom is the best location for wind power in Europe and one of the best in the world. The combination of long coastline, shallow water and strong winds make offshore wind unusually effective. By 2025, the UK had over 12,000 wind turbines with a total installed capacity of 32 gigawatts (GW): 16 GW onshore and 16 GW offshore, the fifth largest capacity of any country



### [Wind Farms in the UK \(2026 Map and Guide\)](#)

This guide provides you with a front-row seat to that transformation, allowing you to explore an interactive wind farm map, learn about the power each site produces, and discover how ...

### [Near and far points of wind power for communication base stations](#)

We investigate the use of wind turbine-mounted

base stations (WTBSs) as a cost-effective solution for regions with high wind energy potential, since it could replace or even outperform



### [Wind Farms in the UK \(2026 Map and Guide\)](#)

Why Wind Energy? UK Wind Farms Overview Key Wind Farms in The UK Benefits of Wind Energy Challenges and Considerations Future of Wind Energy in The UK The UK government has ambitious plans to expand wind energy capacity, aiming to generate one-third of the country's electricity from wind by 2030. This includes investments in both offshore and onshore wind projects, along with advancements in turbine technology to improve efficiency and output. Wind energy is a vital component of the UK's renewable energy strategy. See more on energyguide.uktalbert [PDF]

## **Wind power construction of communication base stations**

We investigate the use of wind turbine-mounted base stations (WTBSs) as a cost-effective solution for regions with high wind energy potential, since it could replace or even outperform

### [Ranking of wind-solar hybrid power generation for UK ...](#)

The objective of this study is to present a comprehensive review of wind-solar HRES from the perspectives of power architectures, mathematical modeling, power electronic converter



[How many kilowatts of wind power does a communication base ...](#)

In the UK, Vodafone has been working with Crossflow Energy for two years to use the latter's wind turbine technology in combination with solar and battery technologies to create a self-powered ...



[Wind power construction of communication base stations](#)

We investigate the use of wind turbine-mounted base stations (WTBSs) as a cost-effective solution for regions with high wind energy potential, since it could replace or even outperform



[CAN WIND ENERGY BE USED TO POWER MOBILE PHONE BASE ...](#)

Base stations in busier areas may have up to ten or more transmitters connected to their antennas, allowing them to transmit on several frequencies at the same time, and to handle communications ...



### [London s requirements for wind power construction of ...](#)

Every off-grid base station has a diesel generator up to 4 kW to provide electricity for the electronic equipment involved. The presentation will give attention to the requirements on using windenergy as ...



### [Is it good to live in a communication base station with wind power](#)

Our study introduces a communications and power coordination planning (CPCP) model that encompasses both distributed energy resources and base stations to improve communication quality ...

### [Wind power in the United Kingdom](#)

Polling of public opinion consistently shows strong support for wind power in the UK, with nearly three-quarters of the population agreeing with its use in 2022, even for people living near onshore wind ...



## Contact Us

---

For catalog requests, pricing, or partnerships, please visit:  
<https://xraydiamondsolutions.co.za>