

What is the power generation capacity of the power station



What is the power generation capacity of the power station



Power plants: average capacity?

The US power grid has 1.3TW of capacity, spread across 25,000 facilities with an average size of 50MW, which have been installed over the past century. This data-file aggregates data into the ...

What is Generation Capacity?

When it comes to generation capacity, think maximum power output. Capacity is the amount of electricity a generator can produce when it's running at full blast. This maximum amount of ...

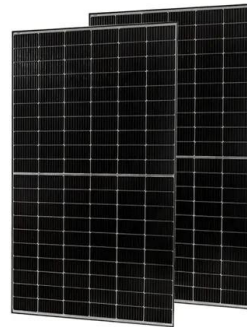


Power players: the world's biggest power stations

The primary purpose of the dam is hydroelectric power generation and its power station has an installed capacity of 13,860MW. Additionally, the dam provides for flood control, silt control ...

What Is a Power Generating Station? Definition, Types, How It ...

Learn what a power generating station is, how it works, and the main types--from fossil fuel and nuclear to hydro, wind, and solar. Explore core components, efficiency, environmental ...



[How Many Megawatts Does a Power Plant Produce?](#)

Nuclear Power Plant Power Output When it comes to consistent, large-scale electricity generation, nuclear power remains a heavyweight contender. How Many Megawatts Does a Nuclear ...



[What Is Generating Capacity and Why Does It Matter?](#)

Electricity generation is the foundational infrastructure that powers modern civilization. For engineers managing this vast system, the most fundamental metric used to ensure a reliable supply of power is ...



[What is the capacity of the energy storage power station?](#)

Quantifying the capacity of energy storage power stations involves technical metrics and standards, which can be somewhat complex in nature. The most prevalent units of measurement ...



Frequently Asked Questions (FAQs)

A measure of electricity generation capacity relative to electricity generation is capacity factor. The U.S. Energy Information Administration (EIA) publishes the average monthly and annual capacity factors ...



What is the difference between electricity generation capacity ...

Electricity generation capacity is the maximum amount of electricity that a power station or other electricity generation source is capable of producing. It is measured in megawatts (MW). ...

What is Generation Capacity?

The generation capacity of a power plant is influenced by a variety of factors, including the type and size of the power plant, the energy source used for generation (such as coal, natural ...



Contact Us

For catalog requests, pricing, or partnerships, please visit:
<https://xraydiamondsolutions.co.za>