

What is the voltage input of the inverter



What is the voltage input of the inverter



[Solar Integration: Inverters and Grid Services Basics](#)

Fundamentally, an inverter accomplishes the DC-to-AC conversion by switching the direction of a DC input back and forth very rapidly. As a result, a DC input becomes an AC output.

[Interpreting inverter datasheet and main parameters , AE 868](#)

Both the maximum voltage value and operating voltage range of an inverter are two main parameters that should be taken into account when stringing the inverter and PV array. PV designers should ...



[Inverter Specifications and Data Sheet](#)

The article provides an overview of inverter functions, key specifications, and common features found in inverter systems, along with an example of power calculations and inverter classification by power ...



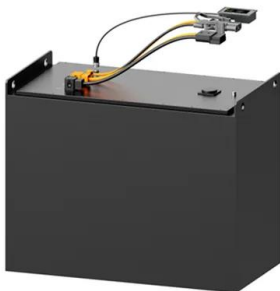
[What is the input voltage of an AC inverter?](#)

What is the Input Voltage of an AC Inverter? The input voltage of an AC inverter refers to the DC (direct current) voltage that the inverter requires to operate.



[Understanding inverter voltage](#)

The start inverter voltage is the minimum input voltage required for the inverter to initiate the conversion process. In the case of a 12V inverter, the start inverter voltage is typically around ...



Power inverter

A typical power inverter device or circuit requires a stable DC power source capable of supplying enough current for the intended power demands of the system. The input voltage depends on the ...



[What does PV input mean in an inverter?](#)

"PV" stands for Photovoltaic, which refers to solar cells that convert sunlight into electricity. The PV input on an inverter or power station is the point where the DC electricity from ...



Definitions of Inverter Specifications

Maximum input voltage DC (V): This indicates the maximum voltage that can be input on the DC side of the inverter. Nominal voltage AC: This indicates the nominal AC voltage output by the inverter.



Inverter Specifications and Data Sheet

A typical power inverter device or circuit requires a stable DC power source capable of supplying enough current for the intended power demands of the system. The ...

Understanding Inverter Input and Output: What is the Relationship

Input Voltage: The input voltage supplied from the DC source to the inverter follows the inverter voltage specifications, which start from 12V, 24V, or 48V. Input Current: determines the amount of electric ...



How to Read Solar Inverter Specifications

The maximum DC input voltage is all about the peak voltage the inverter can handle from the connected panels. The value resonates with the safety limit for the inverter. Additionally, make ...

Contact Us

For catalog requests, pricing, or partnerships, please visit:
<https://xraydiamondsolutions.co.za>