

Which electrical appliances can be used with high frequency inverters



Overview

High frequency inverters are inverters suitable for household DC and AC conversion., which need to convert DC power into AC power required for the. High-frequency inverters use lightweight ferrite core transformers operating at 20-100 kHz, making them compact and efficient for electronics. Pick an inverter that is.

Which electrical appliances can be used with high frequency inverters



[Choosing Between High and Low Frequency Inverters for Your Needs](#)

Compare high and low frequency inverter pros and cons to choose the best fit for your power needs, efficiency, and reliability.

[The Difference Between High Frequency and Low Frequency Inverters](#)

Discover the differences between high frequency and low frequency inverters for your DIY solar projects. This guide covers applications, comparisons, and selection tips to choose the ...

50KW modular power converter



[Which is better, power frequency inverter or high ...](#)

Most electrical appliances can use modified sine wave inverters normally, such as light bulbs, appliances with compressors, and power tools.



[Inverter Low Frequency vs High Frequency , How Do I Compare?](#)

There are two main types of inverters: low-frequency inverters and high-frequency inverters. Low-frequency inverters operate at a frequency of 50 or 60 Hz, which is the same ...



[What should you not plug into an inverter](#)

On the list of devices that should never be connected to an inverter are high-power appliances like refrigerators, air conditioners, and electric stoves. These appliances typically require ...



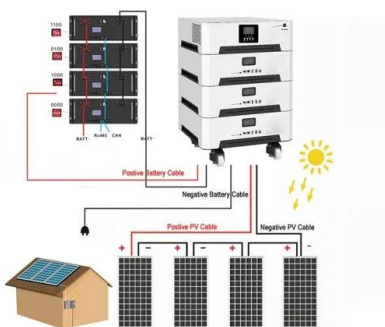
[Ultimate Guide to the 3kW LF Inverter: Power, Battery Sizing, and Use](#)

From household essentials such as lights, fans and refrigerators, to more energy-consuming devices such as power tools and microwaves. The 3kW LF inverter is ideal for residential ...



[? Appliances You Can and Cannot Use with an Inverter - A Guide](#)

At A & E Dunamis, we manufacture high-efficiency inverters designed to support a wide range of household and office appliances. In this guide, we'll help you understand which appliances ...



[Which electrical appliances can be used with high frequency ...](#)

There are two main types of inverters: low-frequency inverters and high-frequency inverters. Low-frequency inverters operate at a frequency of 50 or 60 Hz, which is the same



[High-Frequency Inverter Application Scenarios and Usage](#)

For occasions like outdoor camping, road trips, or mobile offices, high-frequency inverters provide convenient 220V AC power for daily small appliances. Their lightweight and compact form factor is ...

[What is a high frequency inverter and what should be paid attention to](#)

The high frequency inverter has the characteristics of high conversion efficiency and good safety performance. In addition to common household appliances, high frequency inverters are also ...



Contact Us

For catalog requests, pricing, or partnerships, please visit:
<https://xraydiamondsolutions.co.za>